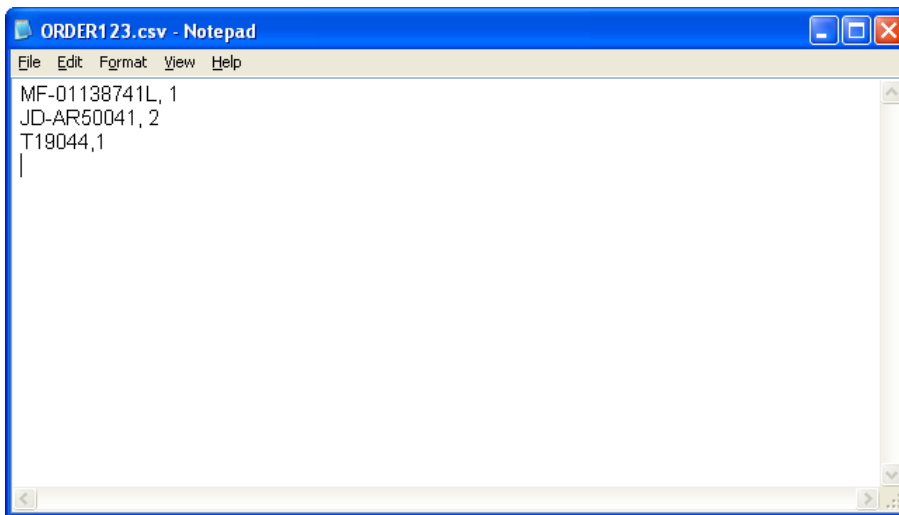


Importing Stock Orders from File

Stock orders may now be imported from a comma separated (.CSV) file.

Files must be in the format: Part Number, Quantity. Part number can be either with or without the prefix.

Files can be created in notepad and saved as .csv, i.e. ORDERxxx.CSV, or created in Excel and saved in .csv format.



Set Up

(System Management, Company Control File)

On the General tab select "General".

Set the "Electronic Catalogue Link" option to "XML".

(Please note that this may interfere with settings for John Deere PM Pro)

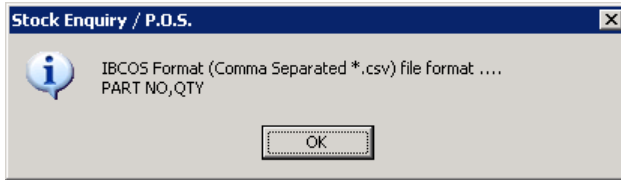
Importing the CSV File

(Parts Control, Stock Order Entry/Amend)

Start a new order and complete the header information in the usual way.

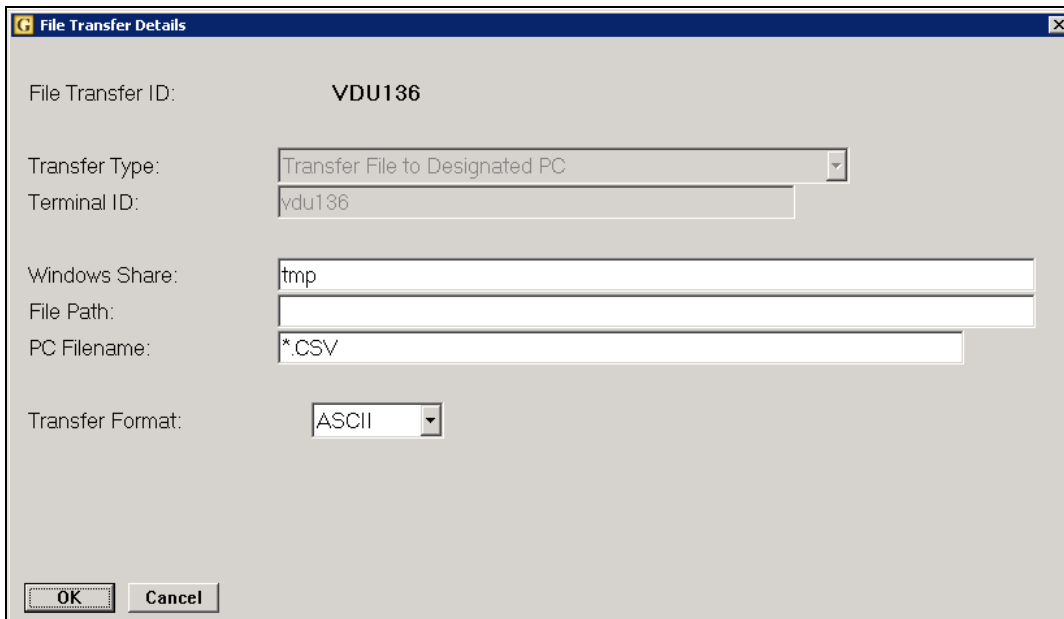
On the Parts tab, in insert mode, press the <Insert> key on the keyboard.

Select "Import".



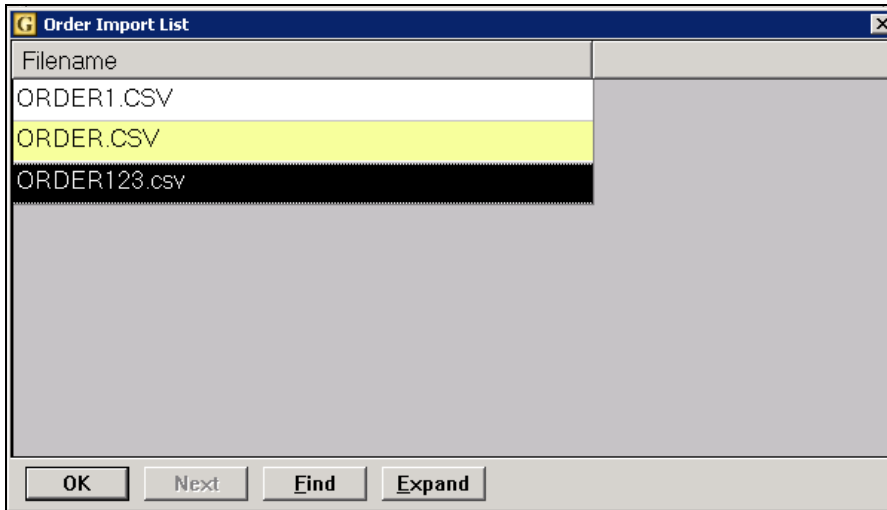
Select “OK” to continue.

The standard File Transfer routine is run to locate and import the file.



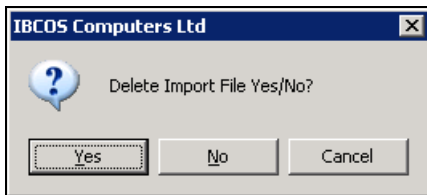
Key Entry Fields

File Transfer ID		Select the File Transfer ID to use, normally the machine name of the pc in use. Set up on the Terminal Identity Maintenance file.
Windows Share		Share directory name where the file is located, e.g. tmp
PC Filename	*.CSV	Accepting the default PC Filename of “*.CSV” works as a wildcard search to find all .CSV files in the directory.



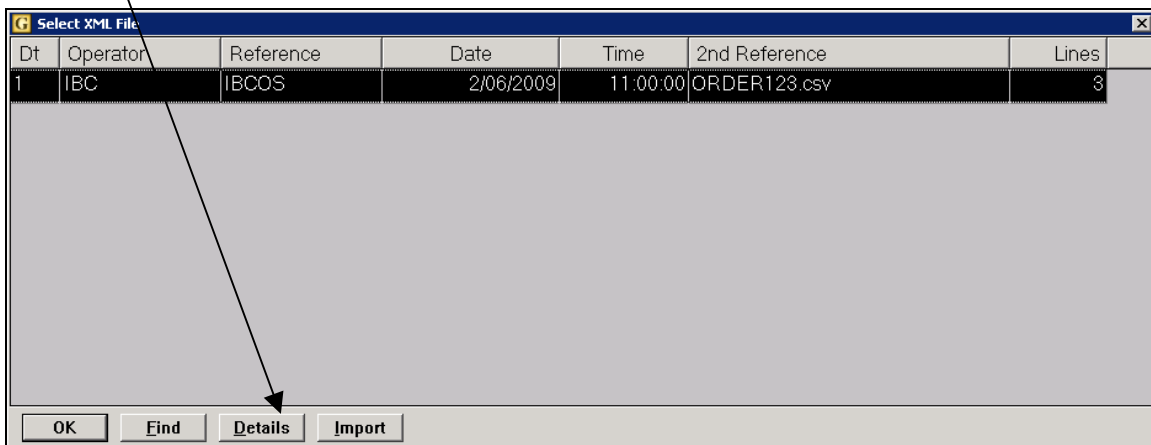
A list of CSV files from the directory are listed. Select an order to import.

An option to delete the original file is offered to prevent orders being imported more than once.



A list of orders ready to add to the order is displayed.

The “**Details**” option will show the part lines relating to the order.

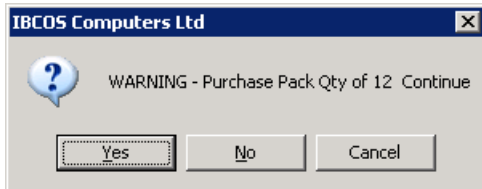


Select “**OK**” to continue.

The part lines will be added to the order.

If any parts have purchase pack quantities, a warning will be displayed if the order quantity is not a multiple of the pack quantity.

Select 'Yes' to continue or 'No' to amend the order quantity.



If any part numbers are invalid, a warning message is displayed.

The order may then be finished in the normal way.

